

Montgomery County Emergency Operations

Presentation to the Montgomery Amateur Radio Club



The Office of Emergency
Management
and Homeland Security

Hazards

Natural, Technological, and Societal



**We never know what the next
Emergency will be...**



Disaster Management Cycle

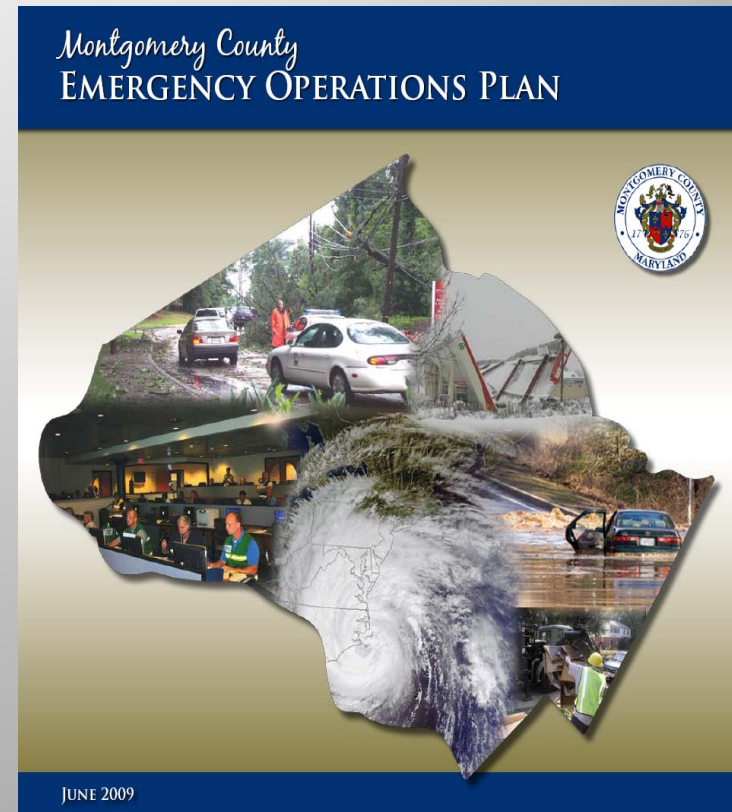


- Preparedness
 - Plan
 - Train
 - Exercise
 - Corrective Action

Emergency Plans

Emergency Operations Plan (EOP)

- The EOP is a multi-discipline, all-hazards plan that establishes a single, comprehensive framework for the management of major emergencies and disasters within the county
- The plan assigns roles and responsibilities to county departments and agencies for use in responding to disasters and emergencies



Continuity of Operations Planning

- Vital Records
- Orders of Succession
- Delegations Of Authority
- Alternate facility
- Interoperable Communications
- Human Capital
- Reconstitution
- Essential Functions

County's Emergency Powers

- Authorizes issuance of Declaration of Public Emergency and related orders as required
- Declare a Curfew
- Prohibit the sale and transport of certain items
- Restrict areas to certain critical personnel
- Manage emergency personnel and resources
- Prioritize restoration of critical resources and facilities

County Response Capabilities

CAPABILITIES

- 1200 career Fire Fighters
- 19 volunteer depts.
 - 500 to 1000 volunteers
- 40 EMS units
- Approximately 1070 Police Officers
- 9 Rescue Squads
- 200 DOT employees with 175 pieces of snow removal equipment

SPECIAL OPERATIONS

- Explosives Unit
- Hazardous Materials (HAZMAT)
- Urban Search and Rescue (FEMA Maryland Task Force 1)
- Water Rescue
- Collapse Rescue
- Weapons of Mass Destruction
- Mass Casualty
- Mass Decontamination



Emergency Operations Center

The EOC may be activated in an emergency at one of three levels depending on the severity of the incident

- Monitoring: Provides for increased monitoring capability and typically involves OEMHS staff and representatives from key public safety agencies.
- Partial Activation: Provides for select activation of ESF primary agencies and key support agencies that may be or will be engaged in the emergency situation.
- Full Activation: Includes all primary and support agencies identified within the Emergency Operations Plan (EOP) which could operate 24 hours a day.

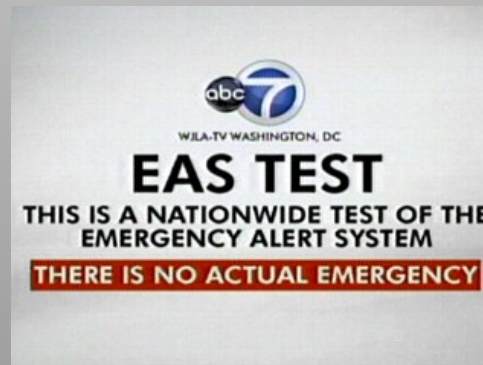


Flexible Notification Systems

- Emergency Alert System (TV and Radio)
- Reverse 911 Alerts (hard line phones)
- Alert Montgomery

www.alert.MontgomerycountyMD.gov

(cell phone, blackberry, pager, e-mail)



Who is Responsible for What?

- **16 Emergency Support Functions and 9 Annexes**—headed by a primary County agency designated by its authorities, resources, and capabilities in the particular functional area.

Each primary agency is supported by an array of organizations that have similar functional roles and responsibilities.

Montgomery County Emergency Operations Center **Support Groups**

Assistant Chief Administrative Officer

Disaster Manager

**ESF #15
External Affairs
(Public Information
Office)**

**MEMA Liaison
Officer**

**Finance and Risk
Management**

Legal

**Emergency
Services
(FRS Group Leader)**

ESF #4 - Firefighting

ESF #9 - Search and
Rescue

ESF #10 - HazMat
Response

**Community
Services
(HHS - Group Leader)**

EFF #6 - Mass Care,
Emergency and
Assistance, Housing and
Human Services

ESF #8 - Public Health
and Medical Services

ESF #11 - Agriculture
and Natural Resources

ESF #16 - Donations and
Volunteer Management

**Infrastructure
Support
(DOT - Group Leader)**

ESF #1 -- Transportation

ESF #3 - Public Works
and Engineering

ESF #7 - Logistics
Management and
Resource Support

ESF #12 -- Energy

**Public Safety and
Municipality
Support
(POL - Group Leader)**

ESF #13 - Public Safety
and Security

**Operations Support
(OEMHS - Group
Leader)**

ESF #5 - Emergency
Management

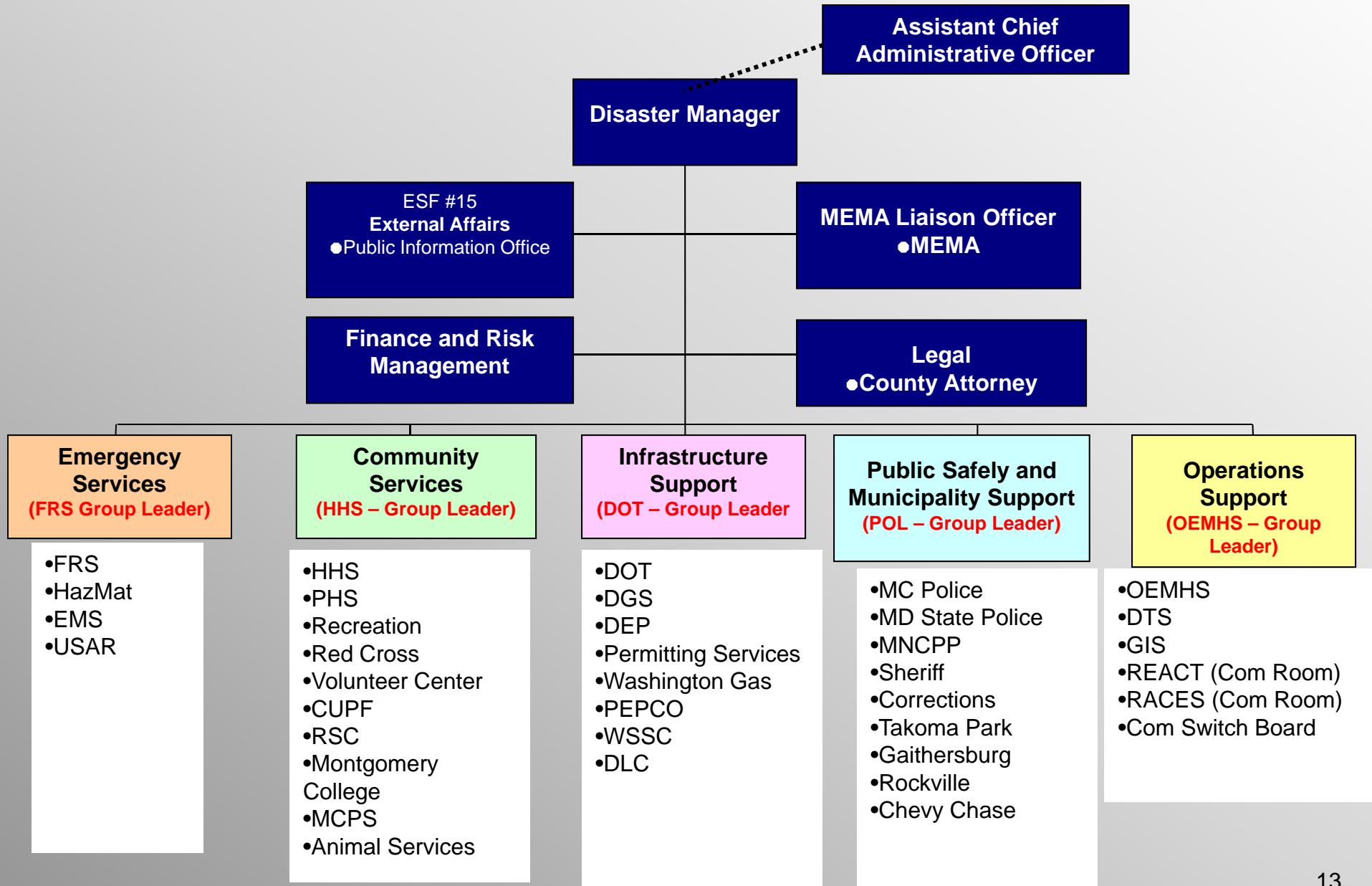
ESF #2 --
Communications

ESF #14 - Long-Term
Community Recovery

Montgomery County Emergency Operations Center Organization Support

EOC Positions

ACAO



Role of the Community

- Stay Informed
- Make a Plan
- Make a Kit
- Get Involved

Resources:

www.montgomerycountymd.gov

www.mema.state.gov

www.fema.gov

www.ready.gov

www.ncd.gov

www.nod.gov

www.redcross.org